



COMPANY PROFILE



BRUSH ELECTRICAL MACHINES LTD

History

Charles Francis Brush of Cleveland, Ohio, USA, founded The Anglo American BRUSH Electric Light Corporation Ltd in London in 1879. The company moved to the current site at Loughborough, approximately 100 miles (180km) north of London, in 1889, where it has remained since. In 1957, The BRUSH group of companies were incorporated into the Hawker Siddeley Group under the name of BRUSH Electrical Engineering Co Ltd. In November 1996 the Hawker Siddeley Electric Power Group was bought by FKI plc from the engineering conglomerate BTR.



BRUSH Electrical Machines Ltd is the largest independent manufacturer of turbogenerators in the world, it is the designated centre of excellence for turbogenerators, power management systems and excitation systems. In 2001, BRUSH Electrical Machines joined with sister companies, BRUSH HMA and BRUSH SEM to found BRUSH Turbogenerators.

Quality

The Company has been registered to ISO 9001 standard, which governs the quality of design, manufacture and service. Maintaining this registration has become a cornerstone of management policy. All equipment complies with relevant European, American and international standard specifications.



Markets

Utility & Industrial Power

BRUSH provides a complete electrical service to all sectors of the power industry. From a product portfolio encompassing generators for base load or intermittent duty, synchronous motors and power management systems, BRUSH can provide equipment and services to meet the most demanding specifications.



Oil & Gas

BRUSH are renowned for the kind of robust yet versatile designs of generators and motors well suited to the harsh operating environments encountered at oil and gas installations, both onshore and offshore anywhere. This has led to BRUSH gaining an excellent reputation as a world class independent rotating machines specialist to this demanding market sector.



Marine

BRUSH also provides a complete electrical service to the marine industry. From generators and control systems, to complete electrical propulsion and auxiliary power system packages for naval, merchant and special purpose vessels, BRUSH has a solution for every challenge. In addition, BRUSH can select and configure systems built from components sourced outside of its business, including generators and motors not within the BRUSH range, variable speed drives, switchgear and transformers.

After Sales Support

BRUSH services its products, located world wide in a variety of environments, with a comprehensive After Sales Support network. Capabilities include installation and commissioning, maintenance, inspections, field repairs, factory repairs, replacements parts, upgrades & modifications and customer training. These services are supported by the BRUSH manufacturing facilities based in Europe as well as technical and sales resources located in North America, Middle East and Asia.



Product Portfolio

Generators

- DG range of air cooled 4-pole turbogenerators up to 65MVA, 15kV.
- DAX range of air-cooled 2-pole turbogenerators for gas and steam turbine drive up to 300MVA, 20kV.
- Hydrogen 2-pole turbogenerators up to 500MVA, 25kV.
- Hydrogen and combined-cooled 2-pole turbogenerators up to 1100MVA, 25kV.

Motors

- MAX range of air-cooled 2-pole synchronous motors up to 120MW, 20kV, including a range suitable for variable speed applications.

Controls

- PRISMIC PMS power management systems for industrial, marine, oil and gas installations, for either on and offshore applications.
- A range of digital automatic voltage regulators and excitation control equipment for generators and synchronous motors.

After Sales Support

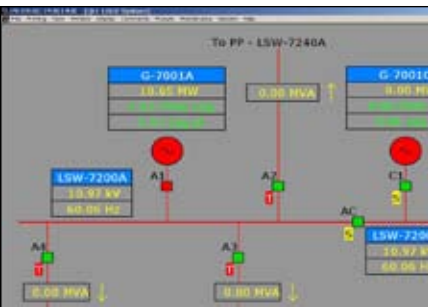
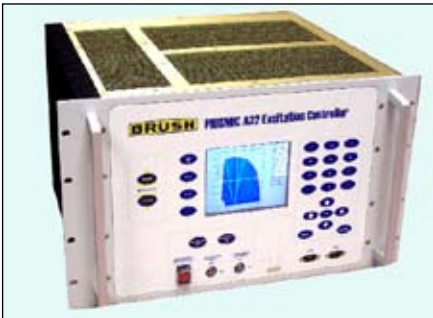
A comprehensive service is offered by our After Sales Support, located at Loughborough, the Netherlands and the Czech Republic, dealing with commissioning, service, repair and maintenance requirements on a world-wide basis.

In addition, service centres in the USA and Malaysia along with local service partners in many countries, we can offer the following services:

- Installation & commissioning
- Maintenance
- Inspections
- Field repairs
- Factory repairs
- Replacements parts
- Upgrades & modifications
- Customer training

Fully documented tailor made training courses are available for all products and systems. These can be offered either at one of our training facilities or at site.

Strategic and operation spare parts are available for all our product range and can be ordered direct or via our online Eshop.



Overseas Offices

FAR EAST BRUSH Turbogenerators

Lot 7 Jalan Majistret U1/26, Hicom Glenmarie Ind. Park, 40150 Shah Alam, Selangor DC, Malaysia
 Tel: +60 (0)3 7805 3736
 Fax: +60 (0)3 7803 9625
 E-mail: salesmy@brush.eu

MIDDLE EAST BRUSH Turbogenerators

PO Box 111209, Abu Dhabi, UAE
 Tel: +971 4362 6391
 Fax: +971 12550 1920
 E-mail: salesme@brush.eu

BRUSH ELECTRICAL MACHINES Ltd
 Falcon Works, Nottingham Road
 Loughborough, Leics. LE11 1EX, England
 Tel: +44 (0)1509 611511
 Fax: +44 (0)1509 610440
 E-mail: salesuk@brush.eu
 Web: www.brush.eu

BRUSH HMA b.v.
 PO Box 3007, 2980 DA Ridderkerk,
 The Netherlands
 Tel: +31 180 445500
 Fax: +31 180 445566
 Email: salesnl@brush.eu
 Web: www.brush.eu

BRUSH SEM s.r.o.
 Edvarda Benese 39, 301 00 Plzeň,
 Czech Republic
 Tel: +420 37 8210111
 Fax: +420 37 8210214
 Email: salescz@brush.eu
 Web: www.brush.eu

BRUSH TURBOGENERATORS Inc.
 15110 Northwest Freeway, Suite 150.
 Houston, Texas 77040, USA
 Tel: +1 (281) 580 1314
 Fax: +1 (281) 580 5801
 Email: salesus@brush.eu
 Web: www.brush.eu